

*Diamond
Villa -2*

4 BHK Luxurious Bungalows

Its beautiful living space...



Think of a place where your home...

Extend into lush green garden & the welcoming sun...

Here you wake up not because of you need to but you want to...



Life is friendly, Joyful & Inspiring...






Ground
 Floor Plan



Where life style is a statement of your fine Taste...



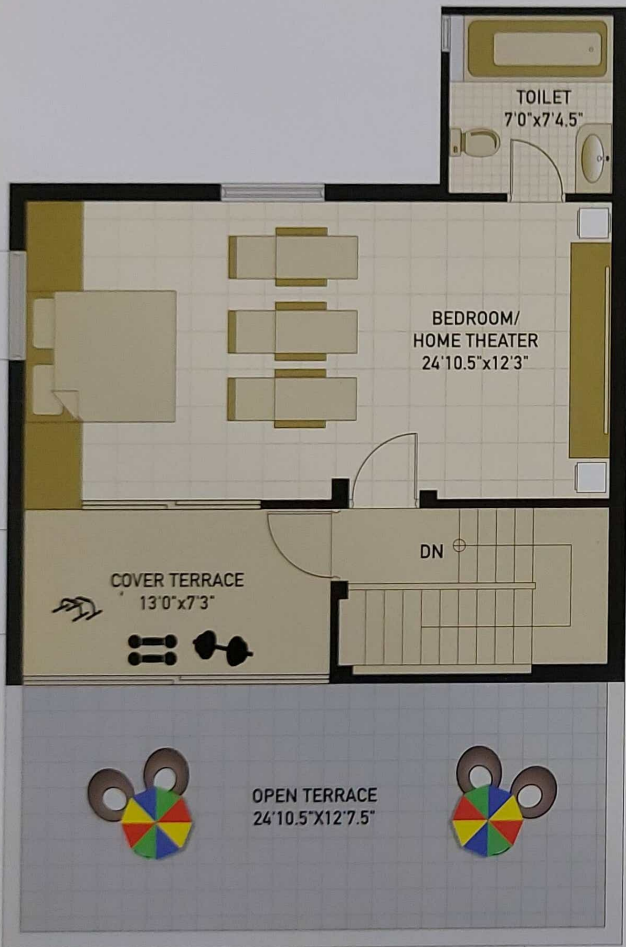

First
Floor Plan



Think life. Think Home...




Second
Floor Plan



Light your homes with love and care... Life is shared...



Before I intrested, Masmerized by its entrance...
Just wanted to enter quick...



Layout Plan



Specification

SUPER STRUCTURE

- Earthquake resistant RCC frame structure with masonry wall.

WALL FINISH

- External double coat plaster with paint internal smooth plaster with putty finish.

FLOORING

- Vitrified tiles in drawing room/dining room/kitchen area & all other bedrooms.
- Master bedroom premium wooden flooring.

KITCHEN

- Superior quality black granite platform with SS Sink. Color tiles dado to up to lintel level.

BATHROOM & PLUMBING

- Decorative glazed tiles up to lintel level.
- Standard jaguar bath fitting.
- Astral premium U PVC

DOOR & WINDOWS

- Decorative main door with teakwood frame & other doors are Color flash door.

SECURITY

- Common areas cover with CCTV Cameras.
- Individuals video door calling.

COMMON ELECTRICAL

- Concealed Premium electrification with ISI mark quality.

UNDER GROUND RCC TANK

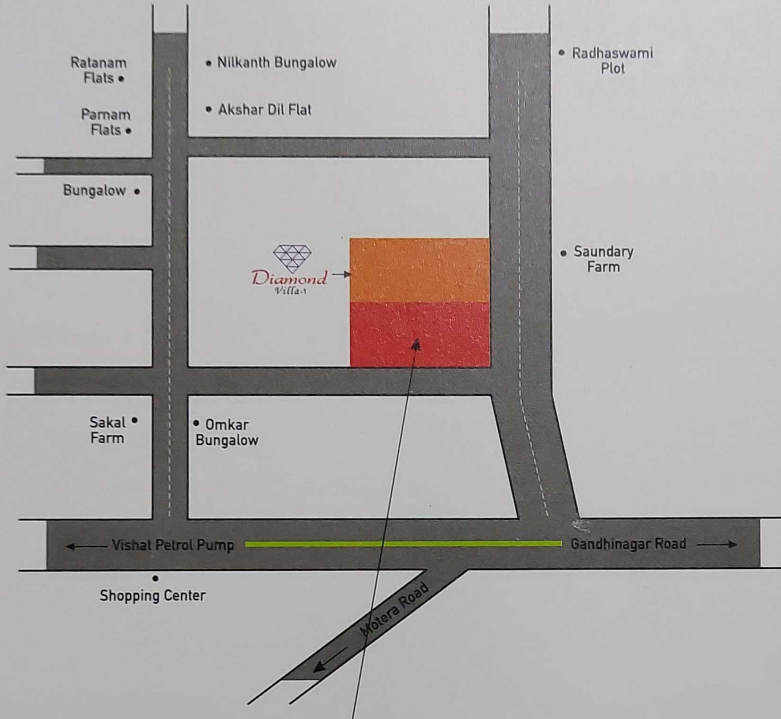
- With sufficient capacity.

TERRACE

- Water proofing in terrace with china mosaic.

WATER SUPPLY

- 24 Hour Water supply with common bore well with submersible pump.



Opp. Saundary Farm, Nr. Omkar Bungalow,
Chandkheda (44 T.P. Skim) Gandhinagar road, Chandkheda.

A PROJECT BY



S.D. Infracon

CONTACT

9925005941, 9375813290

Designer

Rachaita - 9825034565

NOTES: The Developers reserve all rights for any change in plans, specifications or in the whole scheme and such changes shall be final and abide by all members. • All legal charges (AEC, AMC Charges stamp, Registration charges, Service tax what so ever) shall be born by the member. • No external changes are permissible, only internal changes may be with prior permission and member will have to bear the cost. • This brochure is indicative and cannot be considered as the legal document. • The member can look at such legal documents at the registered office of the developers. If government charges/removes any rules and regulation, it is bounded to all members.